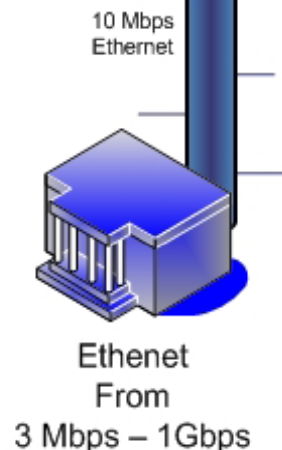


Choose the best access type for each location.

- Frame Relay
- ATM
- Point to Point T-1
- Multilink Frame Relay
- Multilink Point to Point
- Ethernet

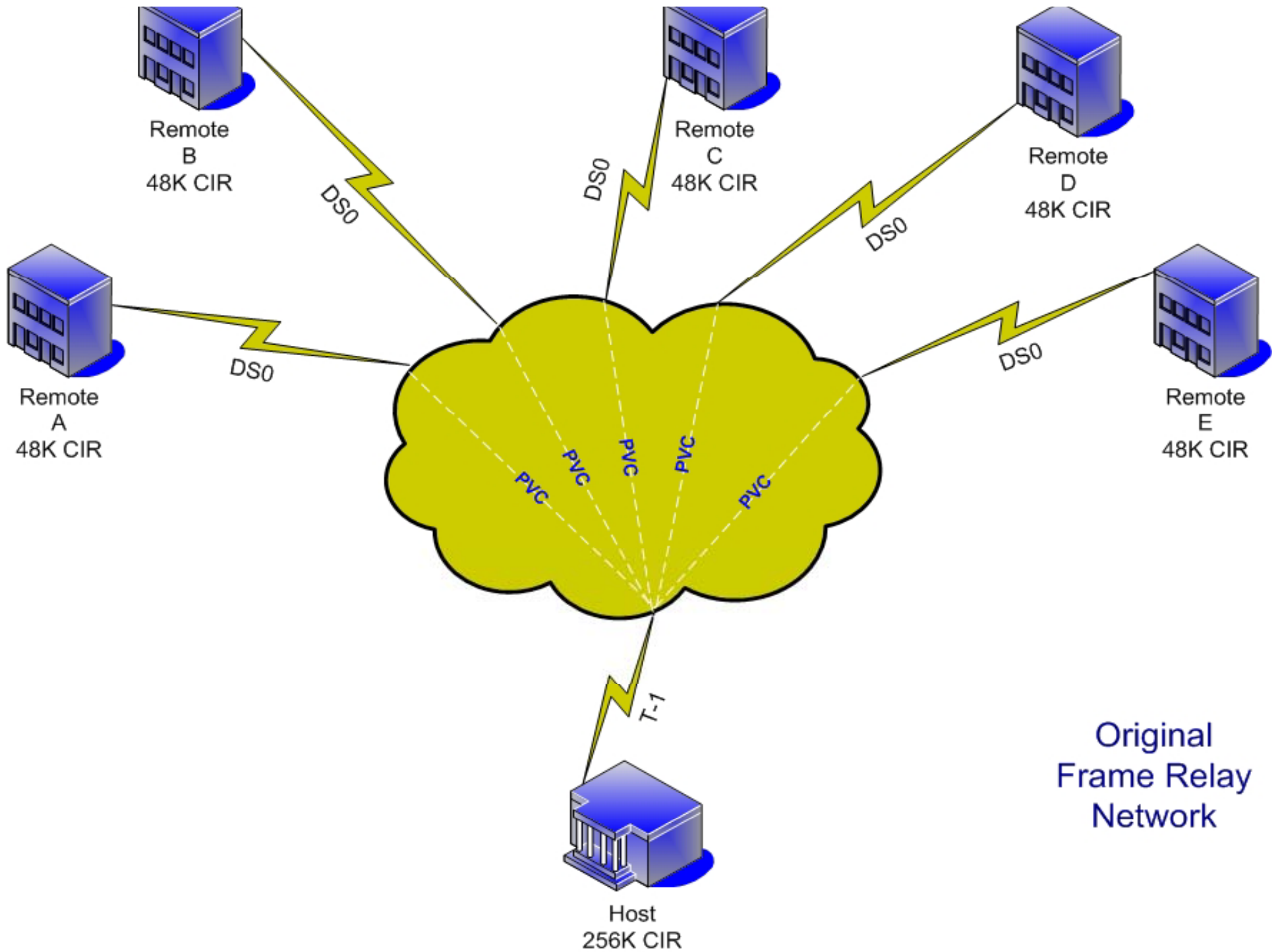


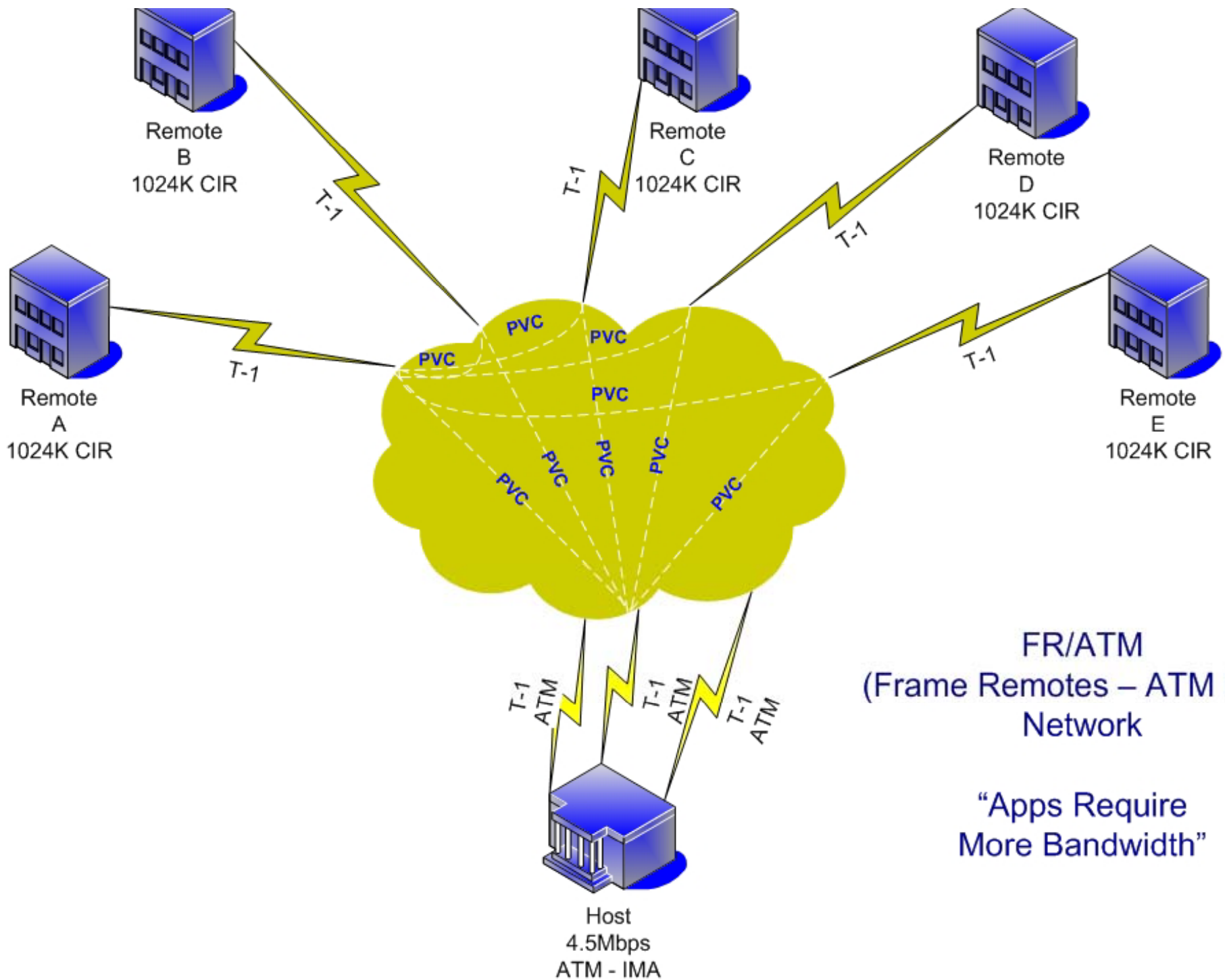
MPLS Network

"Fully Meshed"

All Remotes are Hosts

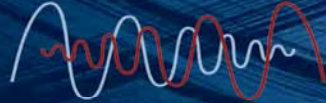
"Any" to "Any" Connectivity





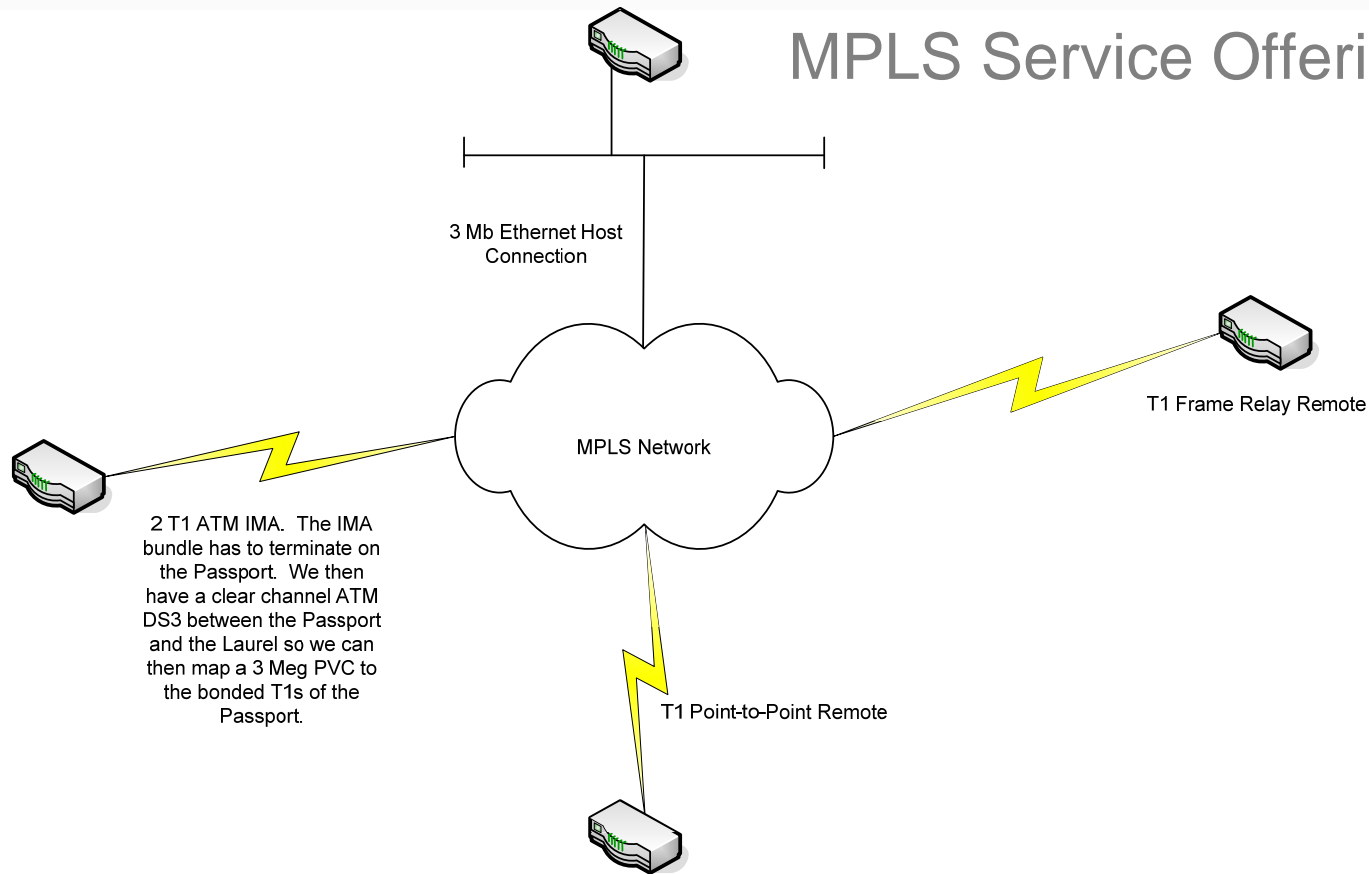
FR/ATM
(Frame Remotes – ATM Host)
Network

“Apps Require
More Bandwidth”



SDN COMMUNICATIONS

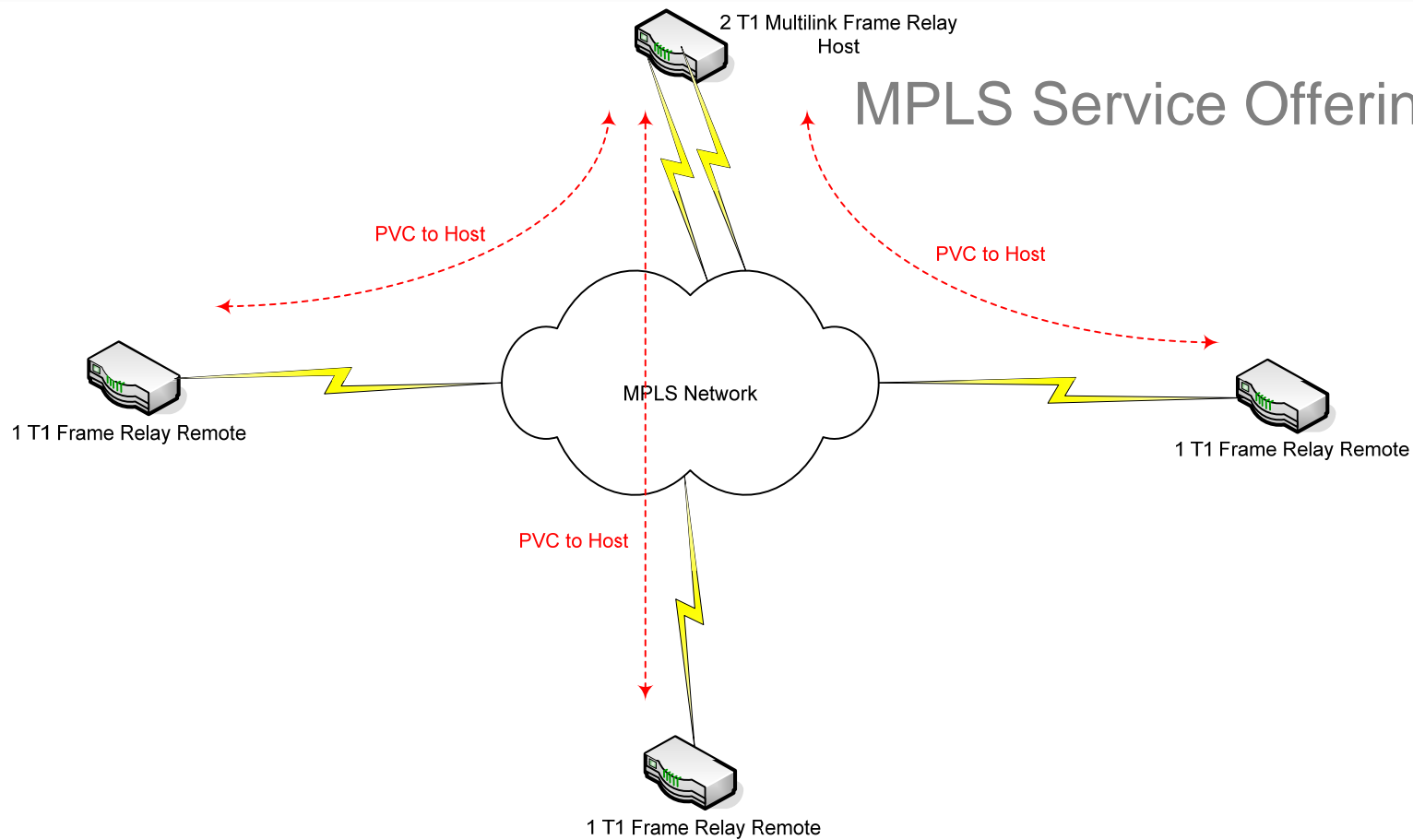
MPLS Service Offerings by SDN



Layer 3 VPN (VRF) utilizing BGP as a routing protocol amongst sites

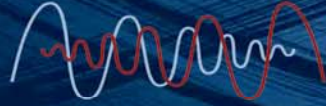


SDN COMMUNICATIONS

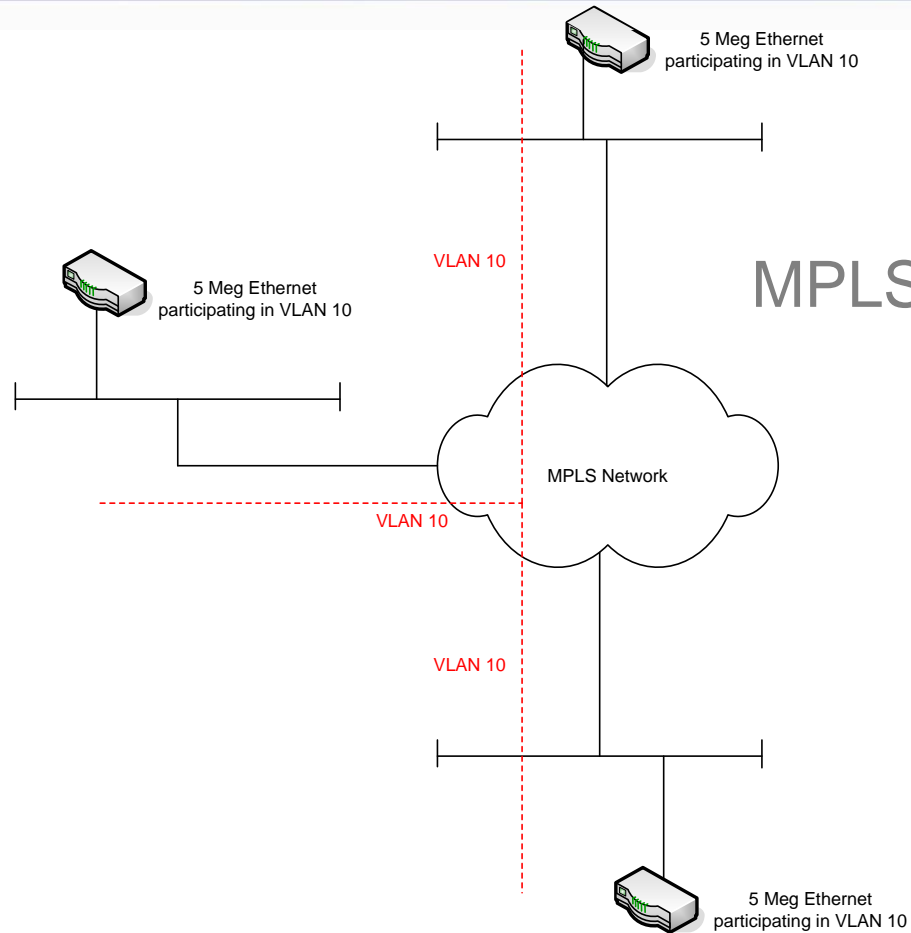


MPLS Service Offerings by SDN

Multilink Frame Relay



SDN COMMUNICATIONS

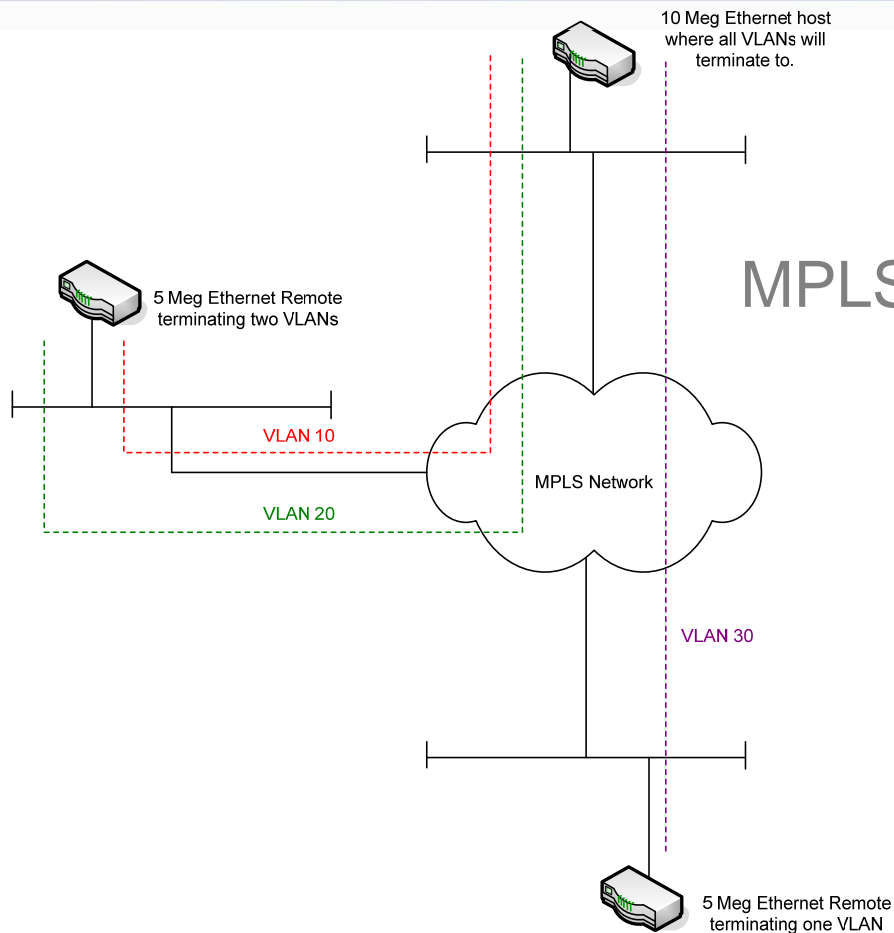


MPLS Service Offerings by SDN

Layer 2 transparent LAN services (VPLS) – same VLAN transported to multiple sites

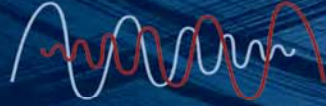


SDN COMMUNICATIONS

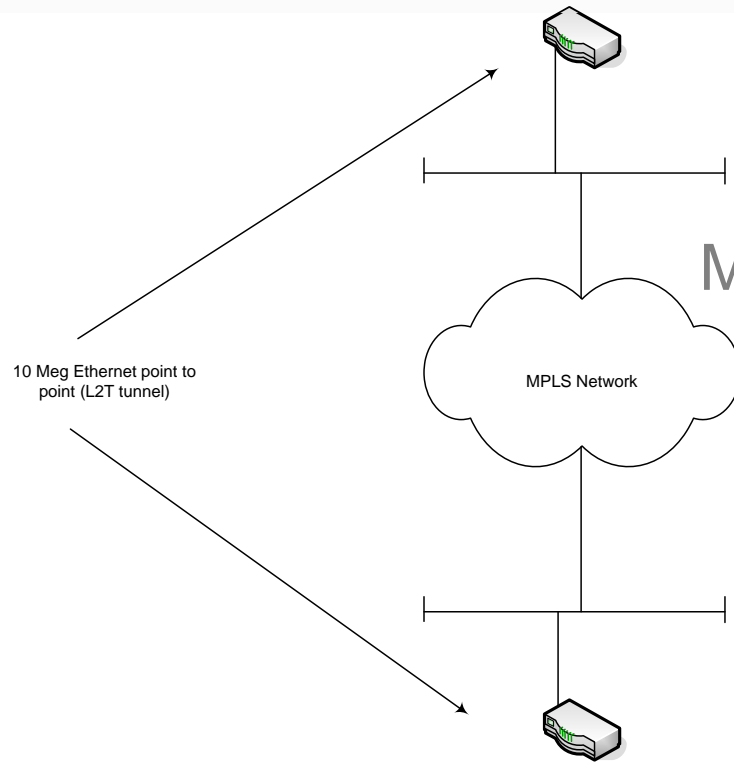


MPLS Service Offerings by SDN

Layer 2 VPN (802.1q) - trunking multiple VLANs back to the same hub location



SDN COMMUNICATIONS



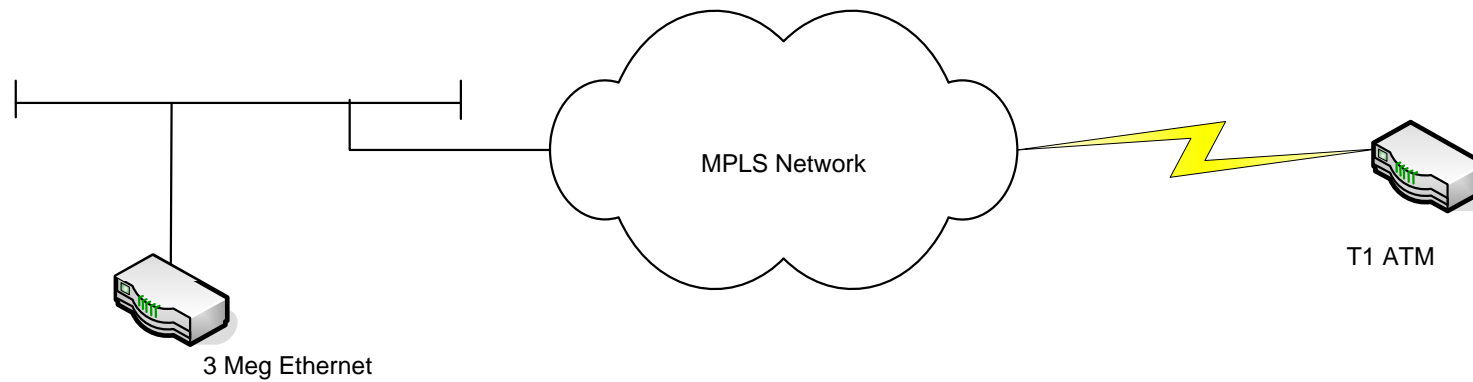
MPLS Service Offerings by SDN

Point to Point Ethernet (L2T tunnel)



SDN COMMUNICATIONS

MPLS Service Offerings by SDN

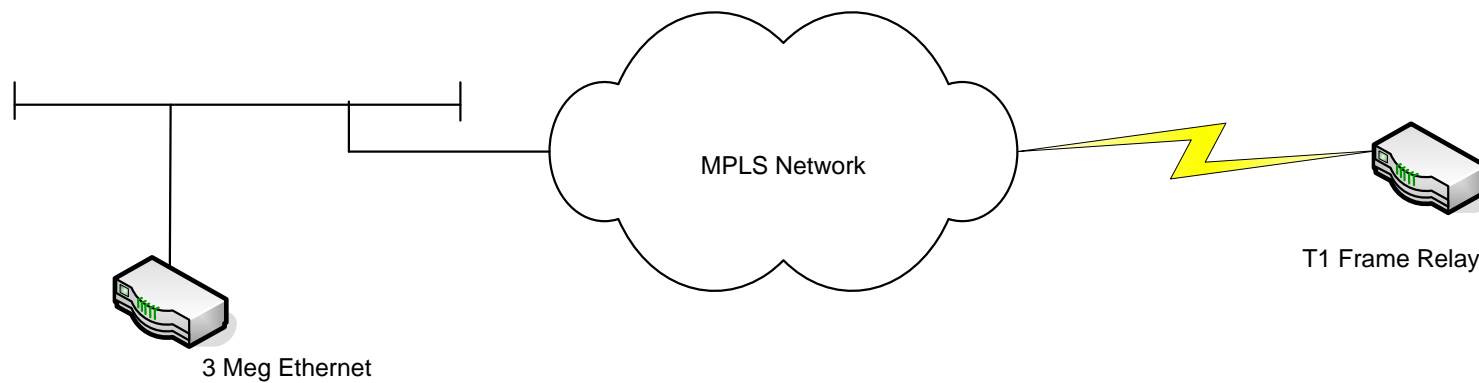


L2 Ethernet to ATM Internetworking



SDN COMMUNICATIONS

MPLS Service Offerings by SDN

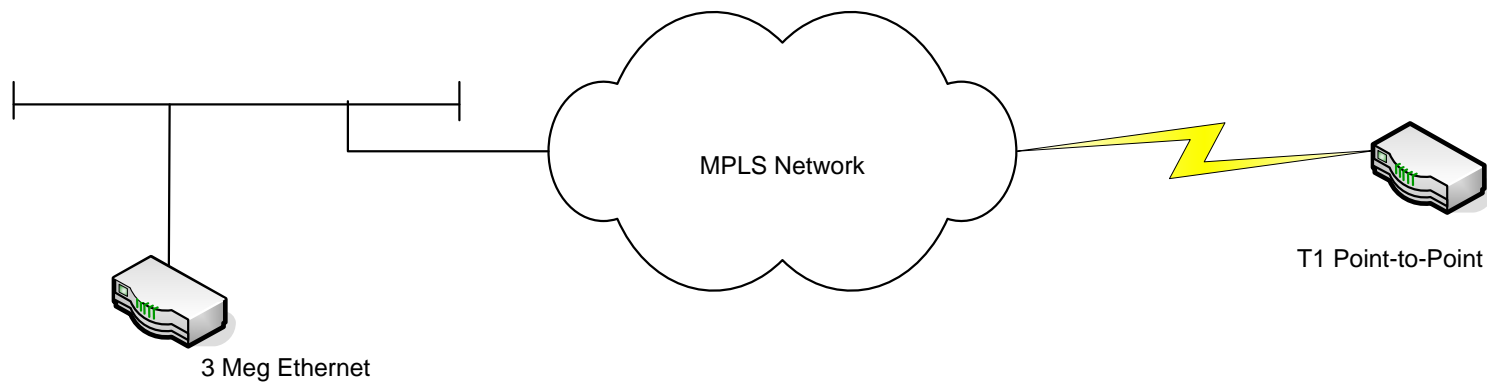


L2 Ethernet to Frame Relay Internetworking



SDN COMMUNICATIONS

MPLS Service Offerings by SDN



L2 Ethernet to Point-to-Point Internetworking